

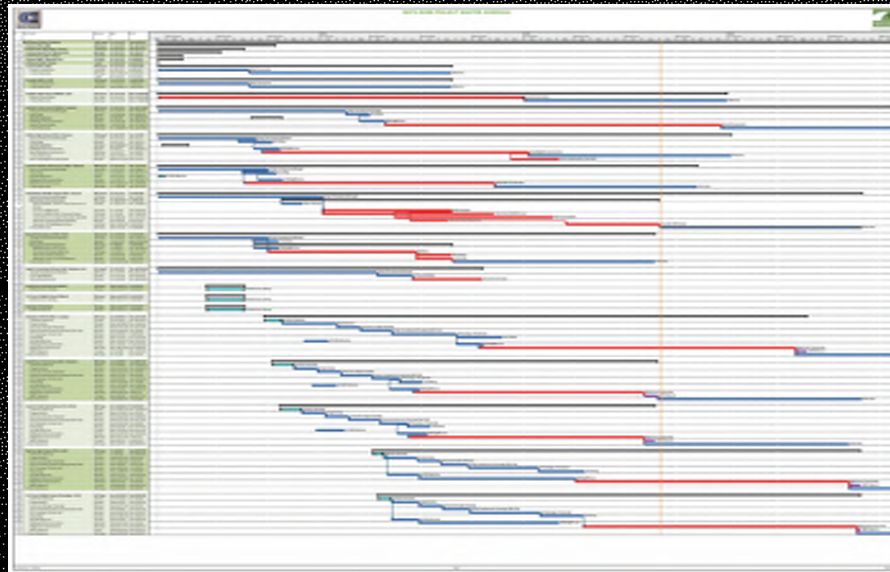


Missoula County Public Schools – Smart Schools 2020 Recap/Elementary

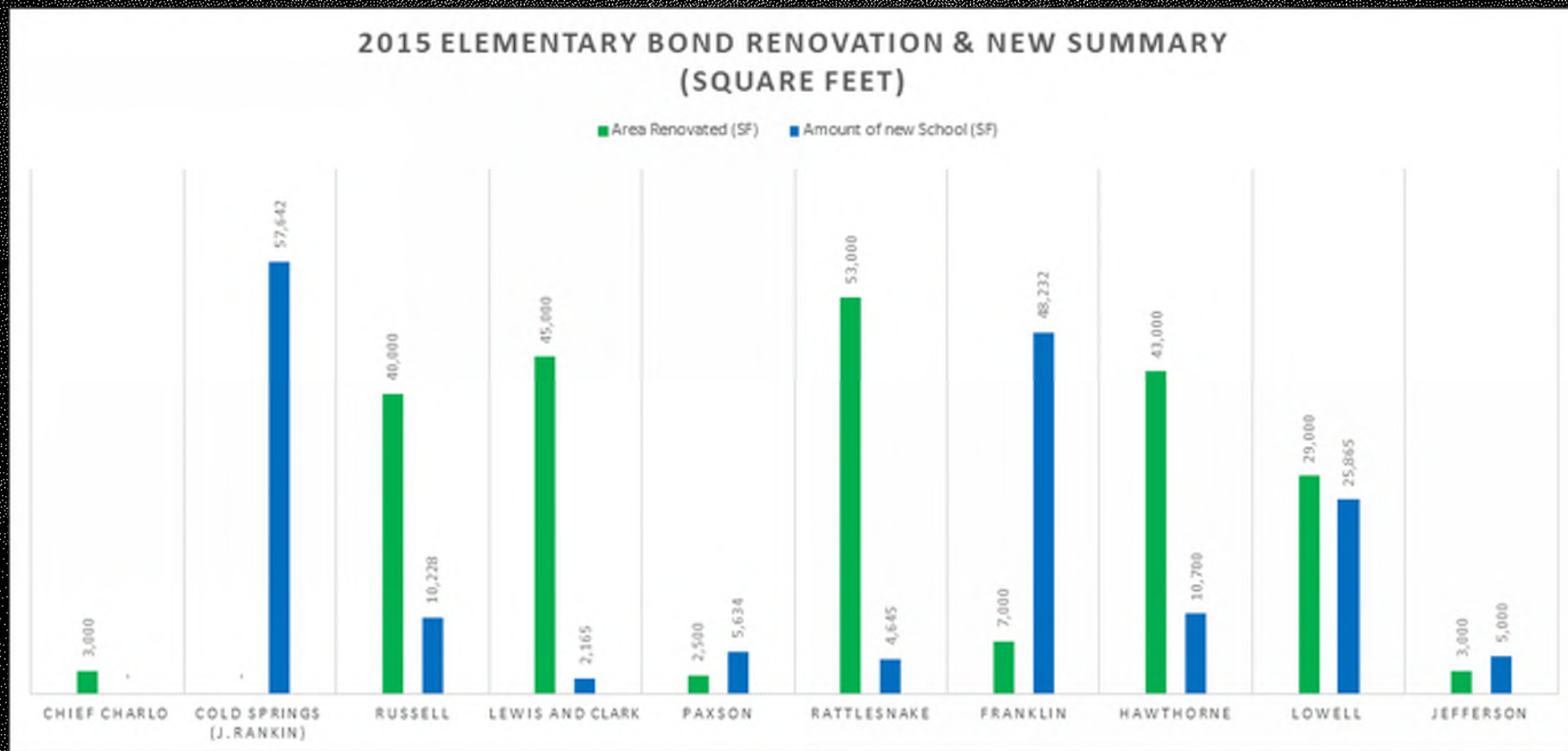
Prepared and Presented by:
Tyson Watson and Erin Nostrant
May 26th, 2020

High Level Elementary Summary

- \$88 million invested in the elementary district
- Major improvements to (10) elementary schools and (3) middle schools
- Deferred Maintenance, Technology, Safety and Capacity improvements were the four primary categories addressed



Improved spaces and added capacity





Chief Charlo Elementary

Improved in 2016

JcM Architects / Sirius Construction

Major Improvements:

- Safe-Secure New Entry
- Defined Front Entry







Franklin Elementary

Completed Fall of 2017

LPW Architects / Jackson Contractor Group

Features:

- New facility built around improved existing gymnasium
- Ample breakout space
- Open commons
- Modern, flexible classrooms







Entrance Before

Hawthorne Elementary

Completed Fall 2020

DSA Architects / Sletten Contracting

Features:

- New cafeteria/multipurpose room
- ADA Access - Elevators;
- Safe and secure entry; new administration area
- New & improved classrooms, library, media area













Jeannette Rankin Elementary

Completed Fall 2019

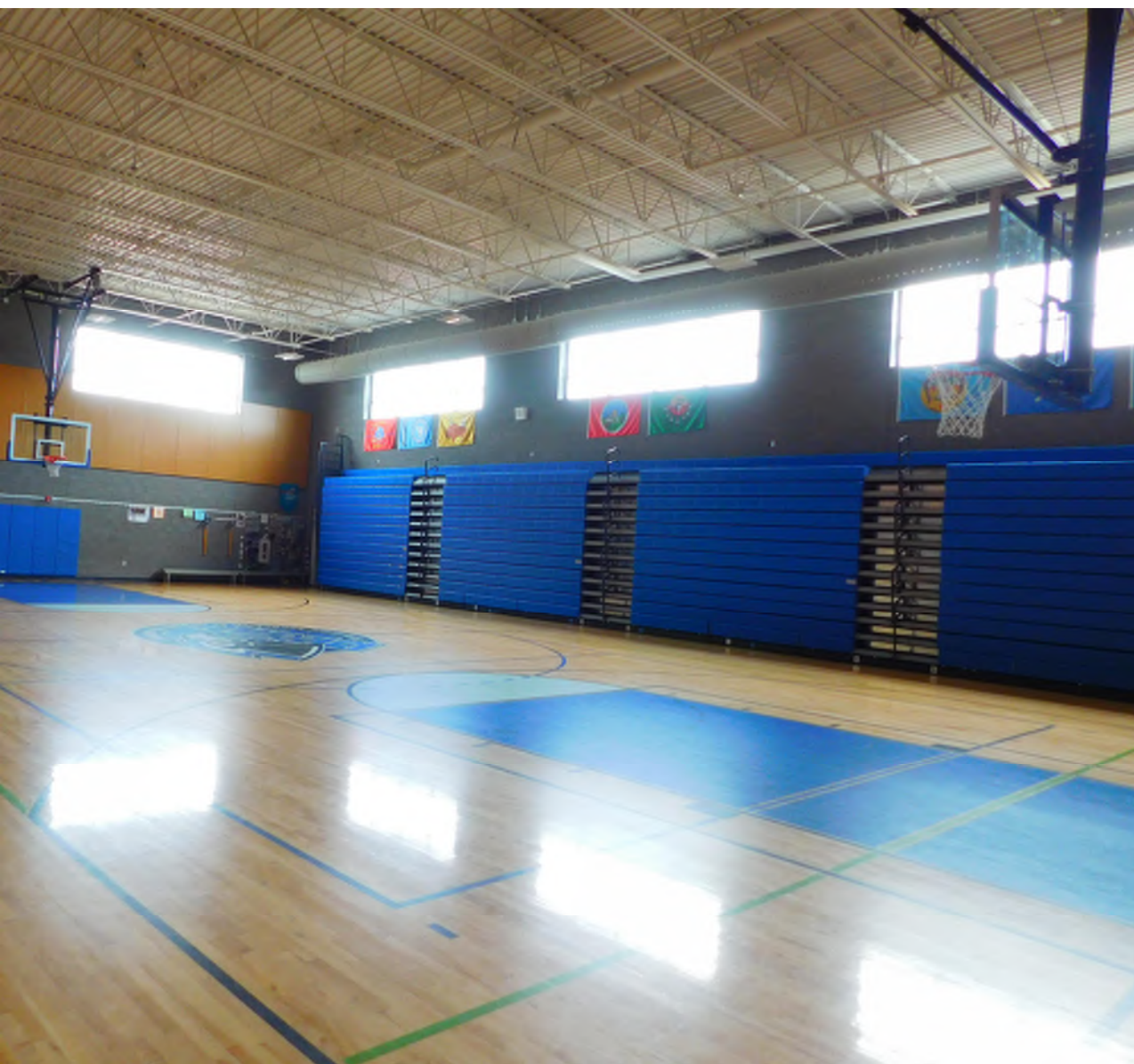
A&E Architects / Sletten Contracting

Features:

- Learning Stairs
- Open Commons
- Safe and Secure Entry
- Beautiful Library, Music Rooms and Gymnasium
- Bright classrooms and Breakout Spaces









Entrance Before

Lewis and Clark Elementary

Completed Fall 2019

Cushing Terrell (CTA) / Dick Anderson Construction

Features:

- New Secure, Identifiable Entry
- New Cafeteria
- ADA improvements - Elevator
- Improved classrooms and Breakout Spaces
- Remodeled Library











Lowell Elementary

Completed Fall 2017

LPW Architects / Dick Anderson Construction

Features:

- Modernized classrooms in existing and new classrooms
- Flexible support rooms and break-out spaces
- New kitchen and dining area
- Outdoor amphitheater and oversite of playground
- Significant improvement to the existing school











Paxson Elementary



Completed April 2017

A&E Architects / Western Interstate Construction

Features:

- **Secure Entrance**
- **Flexible Break-out spaces**
- **Improved accessibility to playground**
- **Modernized HVAC in new wing**







Rattlesnake Elementary

Completed August 2017

Paradigm Architects / Sirius Construction

Features:

- Secure Entrance
- Breakout Spaces
- Improved Mech/Elect/Plumb throughout
- Improved site and playground









Russell Elementary

Completed Fall 2018

LPW Architects / Dick Anderson Construction

Features:

- Secure Entrance and Administrative Improvements
- Expanded Classrooms and Breakout Spaces
- New Cafeteria and Kitchen
- Improved Mechanical
- Playground improvements – Sod, Basketball Courts









WHAT IT'S ALL ABOUT!





*A SPECIAL THANK YOU TO ALL INVOLVED IN
THE BOND EFFORTS!!!*

By our Estimation, about 445,500 craftperson hours were funded and spent working on the MCPS Elementary Schools over the last Five Years, with no major incidents or injuries.